



## Upcoming Event

**SCORE Association Northeast Massachusetts**, 100 Cummings Center, Suite 310-G, will host *How to Manage Your Business Virtually During Times of Uncertainty*, a Google livestream event, on **Wednesday, May 6, from 12:00 to 1:00 PM.**

Register online to learn tips on how to manage a business remotely during the COVID-19 crisis. Unable to attend the livestream? Complimentary mentoring sessions can be scheduled here.



## Virtual Services



BEVERLY ATHLETIC CLUB

**BAC Express**, 600 Cummings Center, Suite 170-X, is offering fitness and wellness resources to keep members healthy and active while the club is closed. It is also raffling off a few complimentary one-year memberships. For additional information, contact [community@beverlyathletic.com](mailto:community@beverlyathletic.com).

## Noteworthy News

**Liza Indiciani Studio of Dance (LISD)**, 100 Cummings Center, Suite 115-D, is home to more than 300 dancers aged two to 18. Due to COVID-19, LISD is closed, and all classes and performances have been suspended indefinitely. The studio recently hosted a drive-by parade to allow students to see their teachers. Staff lined up along East Drive as students and their families drove by, waving and holding posters. The event was a huge success and a great way to bring everyone together while remaining at a safe distance.

In an effort to keep everyone at home happy and healthy, the studio has been offering free live classes on its [Facebook page](#). To participate, simply like and follow the [page](#). Classes geared toward all ages and ability levels are offered up to five days per week.



**Dunham Ridge**, our newly developed commercial property in Beverly, has space available for life sciences



companies and manufacturers supporting the COVID-19 relief effort. Located directly off Route 128 at Exit 19, this new campus offers flexible, open space and can easily accommodate laboratory uses or light manufacturing for equipment such as PPE.

48 Dunham Ridge is a brand-new five-story office building with approximately 5,800 square feet of high bay 23-foot space available with direct tailboard loading. Nearby, approximately 14,800 square feet of first floor space is available at 50 Dunham Ridge, including 4,800 square feet with easy access tailboard high loading and approximately 10,000 square feet accessible through lobby entrance double doors.

Additionally, we have available office, lab, and medical suites in other communities north of Boston. Unleased space may be considered for use by appropriate partners assisting in the COVID-19 relief effort on a not-for-profit basis.

To inquire, please contact Michelle Paul at 781-589-0612 or [mcp@cummings.com](mailto:mcp@cummings.com).

## Special Offer

Boston Chauffeur, 600 Cummings Center, Suite 167-Z, has collaborated with Restaurant Depot to offer a grocery concierge service to clients in the Boston area during the COVID-19 pandemic. Simply select your groceries, and a BC team member will contact you to complete the order. Services are offered for a flat rate, and orders placed **before 3:00 PM** are delivered the next day. For additional information, call 978-921-4334 or [complete the online form](#).



## Call for Submissions



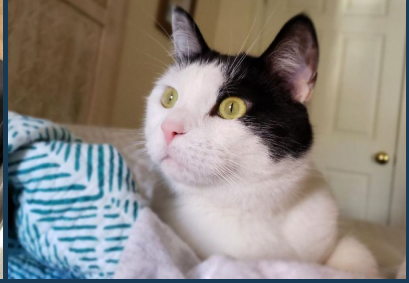
### We want to hear from you!

Have you adapted your business to offer virtual services during the pandemic? Is your firm providing vital healthcare services or medical research during this challenging time? Hoping to share some helpful tips or special offers with other Cummings clients? Email your news, offers, and photos to Helen Jeffers at [newsbrief@cummings.com](mailto:newsbrief@cummings.com).

## Simple Smiles

During these times of uncertainty, it can be difficult to see the sunnier side of things. We are inviting all North Shore News readers to submit photos of something or some place that without fail always makes them smile. The submission possibilities are endless: We only ask that these photos do not include people.





## Shoe Snippets

*Fun facts about the historic Cummings Center site, formerly known as "The Shoe"*

---

The Shoe complex was so massive that messengers were given roller skates to facilitate the delivery of documents and parcels to employees across the factory's 25 acres of floor space.

[Client Directory](#)

[cummings.com](http://cummings.com)

[Service Call Request](#)

[Executive Office Suites](#)



If you no longer wish to receive our emails, you may unsubscribe below. Unfortunately, if you unsubscribe, you will not receive important building notices such as water and electric shutdowns or fire alarm testing.